

LED COOLING

Thermal analysis

System analysed

Heat sink = extruded profile 280x40 (mm), length 402 mm

Surface finishing = black anodised

Convection = natural

Heat sink position = horizontal

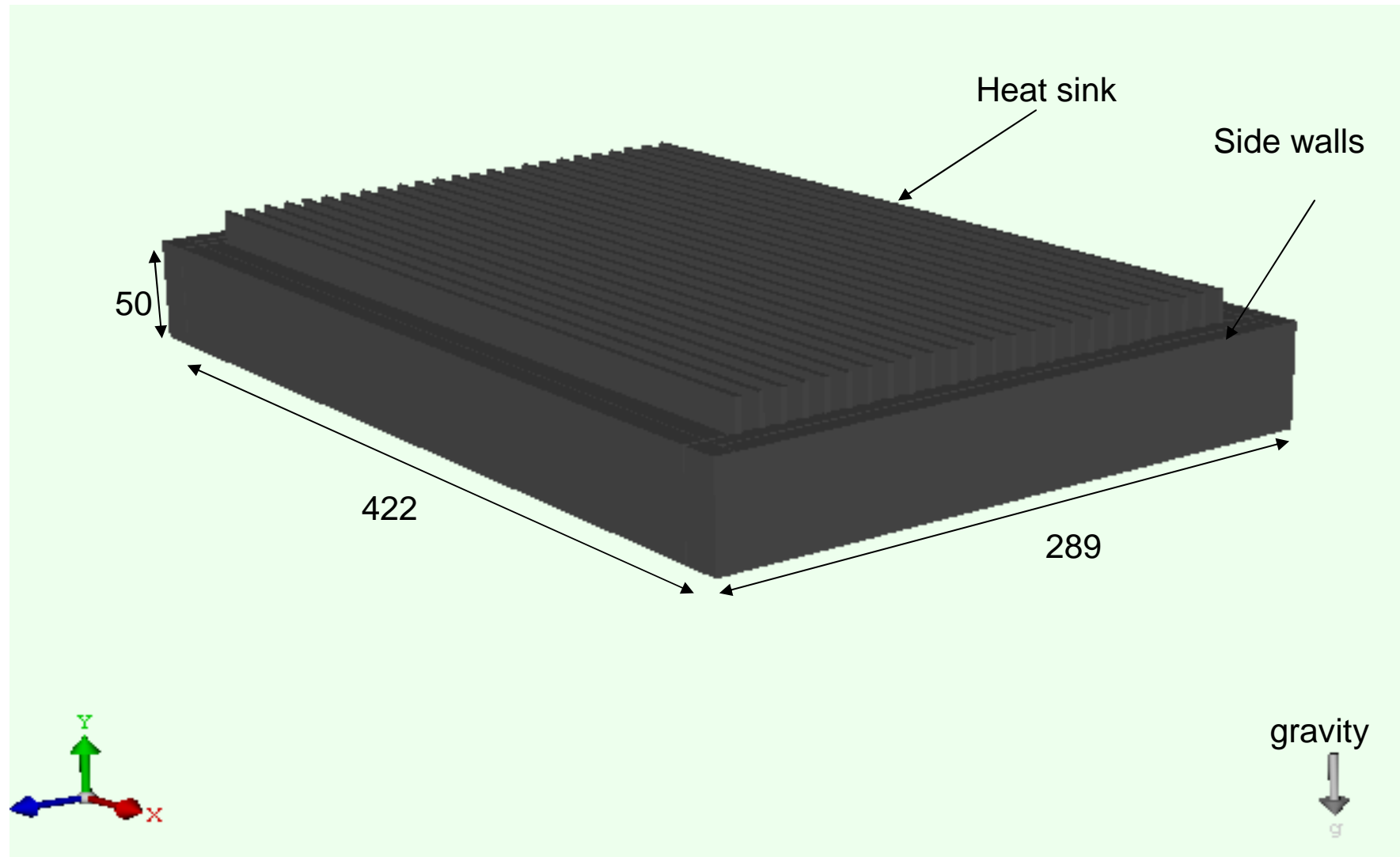
Applied power = 72 W (96 led each one with 0.75 W)

Surrounding ambient temperature = 60 °C

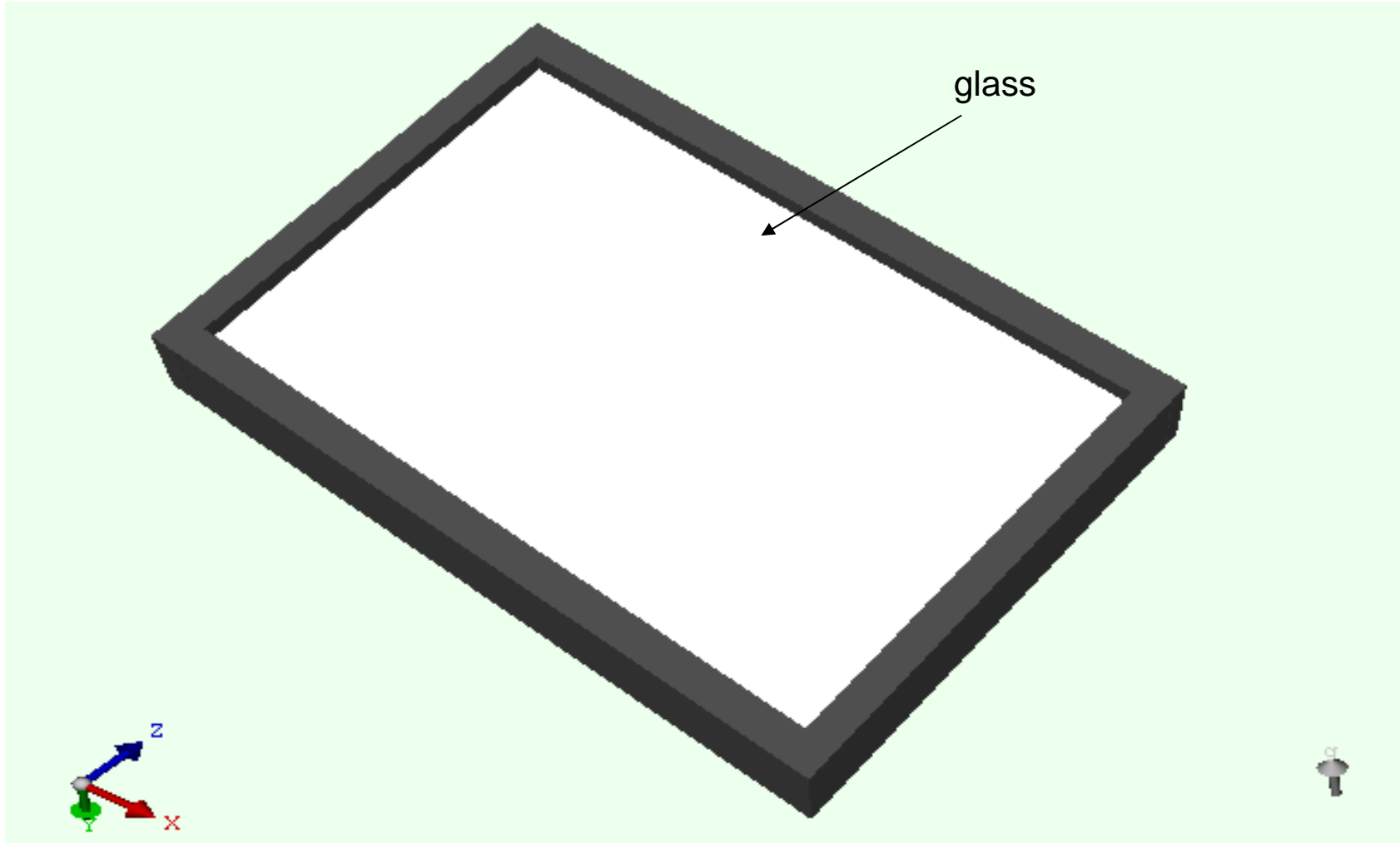
Result

Maximum temperature on the heat sink = 83 °C

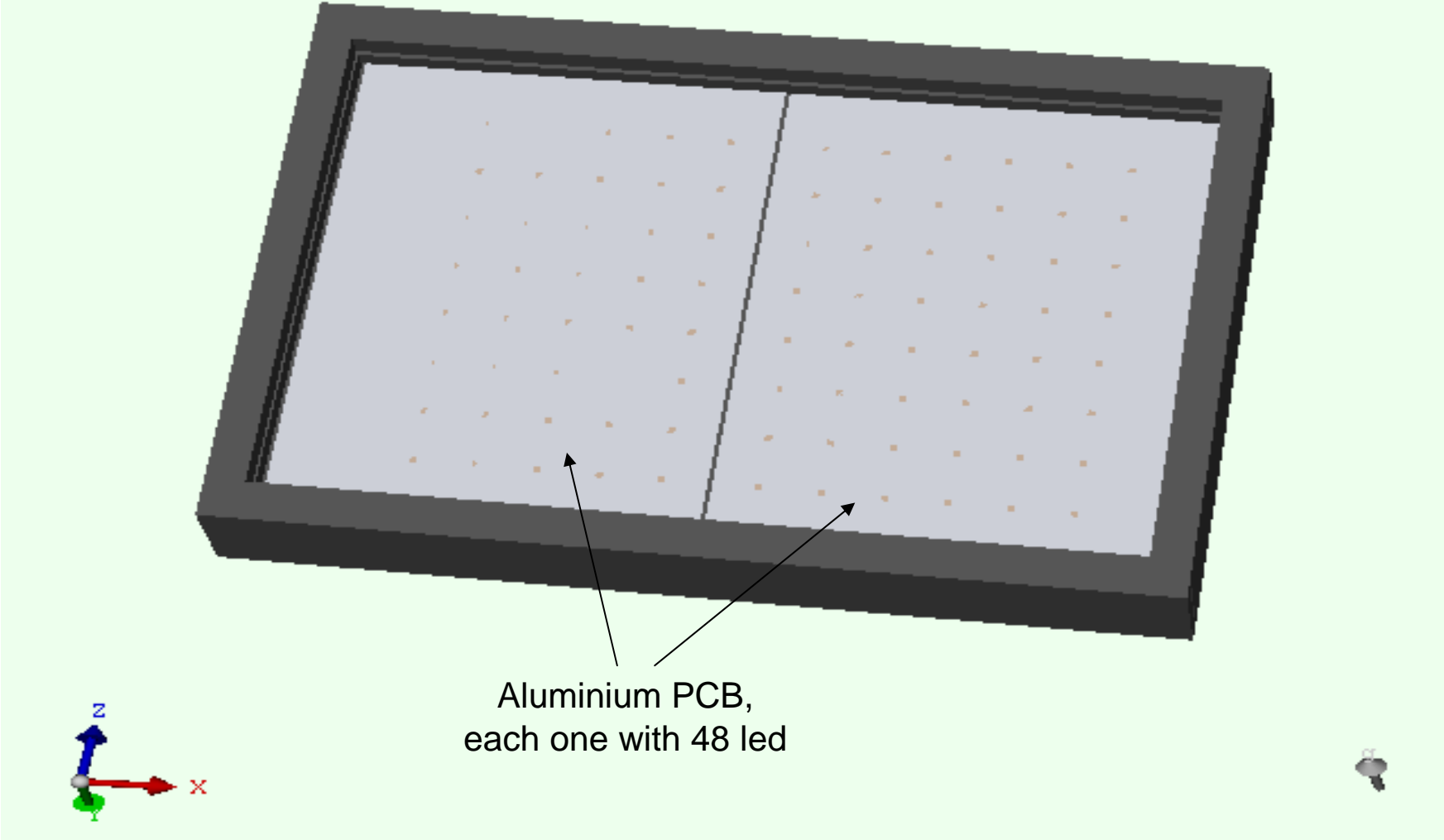
3D MODEL



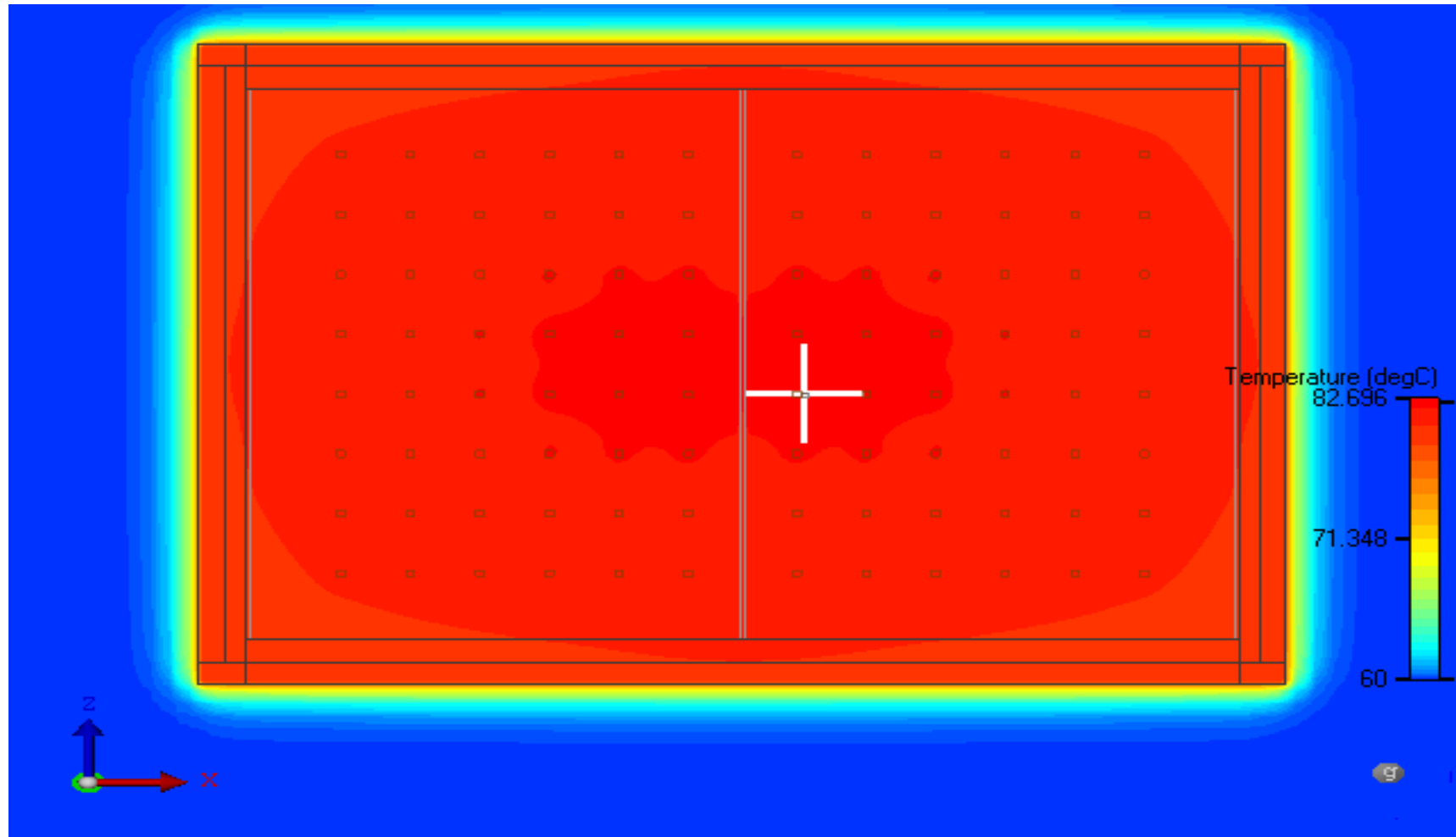
3D MODEL



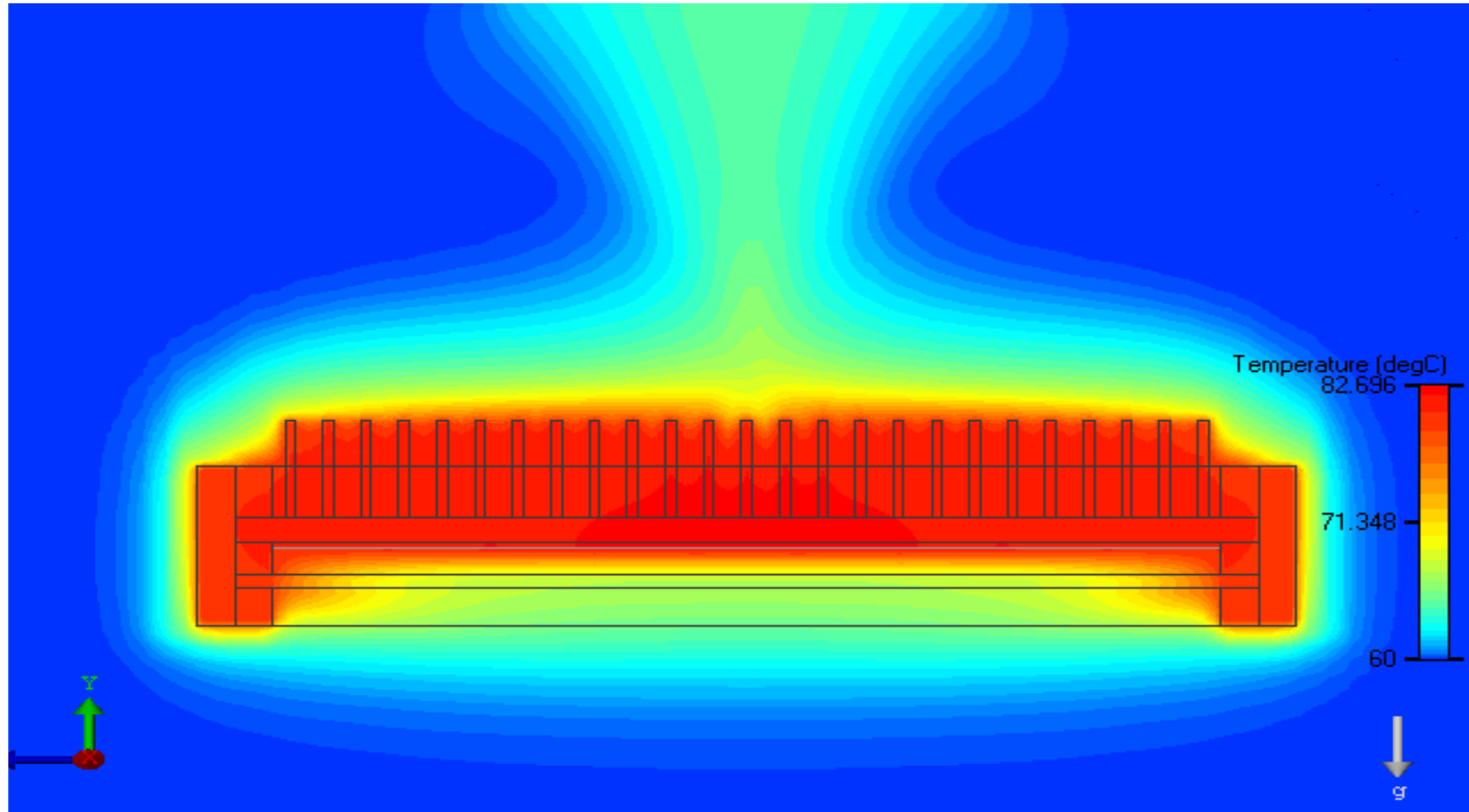
3D MODEL



TEMPERATURE ON THE HEAT SINK BASE



TEMPERATURE ON A SECTION



TEMPERATURE ON A SECTION

